

## Process Change Notice

### **Parts Affected:**

All surface mount Current Limiting Diodes (CLDs) manufactured in the SOD-80 case.

### **Extent of Change:**

Devices that are presently packaged in the SOD-80 case are being replaced by their electrical equivalents in the epoxy molded SOD-123FL case.

### **Reason for Change:**

Based on feedback received from customers using automated pick and place processes, the SOD-80, leadless, glass case is difficult to handle due to its cylindrical shape and may have the tendency to “roll” during automated PCB processing. The SOD-123FL, flat, epoxy molded, hexahedron shaped case provides a more stable platform for automated PCB processing as compared to the SOD-80 case. The SOD-123FL case was designed with a maximum height profile of 0.8mm, making it possible to use this device in applications where board height is critical. **See Figures 1 and 2.**

### **Effect of Change:**

Operating and Storage Junction Temperature Range (SOD-80 Case) -65°C to +200°C  
Operating and Storage Junction Temperature Range (SOD-123FL Case) -65°C to +150°C

This change does not affect the electrical characteristics of any device.

The SOD-123FL can be mounted on the same mounting pad geometry as the SOD-80 case; no changes are required in PCB layout or mounting pad geometry. **See Figure 3.**

### **Qualification:**

Standard evaluation and qualifications completed resulting in no performance differences compared to current product.

### **Effective Date of Change:**

Q3 2010.

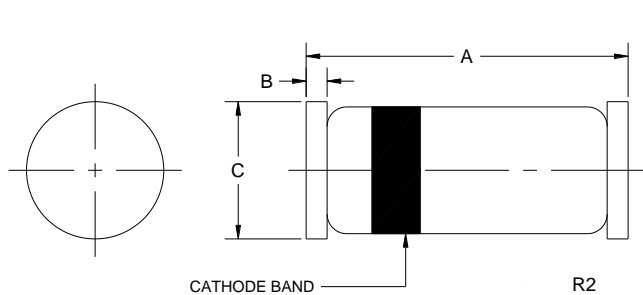
### **Sample Availability:**

Customers are encouraged to contact their Salesperson or Manufacturer's representative to obtain information regarding last time buy opportunities for existing SOD-80 inventory and to obtain samples of devices manufactured in the SOD-123FL case.

**Part Numbers Affected:**

<b>Existing Part #'s (SOD-80 Case)</b>	<b>Replacement Part #'s (SOD-123FL Case)</b>
CCLM0035	Discontinued due to low demand
CCLM0130	CMJ0130
CCLM0300	CMJ0300
CCLM0500	CMJ0500
CCLM0750	CMJ0750
CCLM1000	CMJ1000
CCLM1500	CMJ1500
CCLM2000	CMJ2000
CCLM2700	CMJ2700
CCLM3500	CMJ3500
CCLM4500	CMJ4500
CCLM5750	CMJ5750
CCLHM080	CMJH080
CCLHM100	CMJH100
CCLHM120	CMJH120
CCLHM150	CMJH150

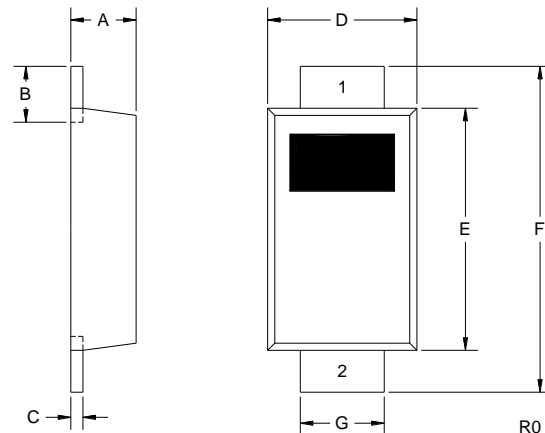
**Figure 1: SOD-80 Mechanical Outline**



SYMBOL	INCHES		MILLIMETERS	
	MIN	MAX	MIN	MAX
A	0.130	0.146	3.30	3.71
B	0.014		0.35	
C (DIA)	0.049	0.067	1.25	1.70

SOD-80 (REV:R2)

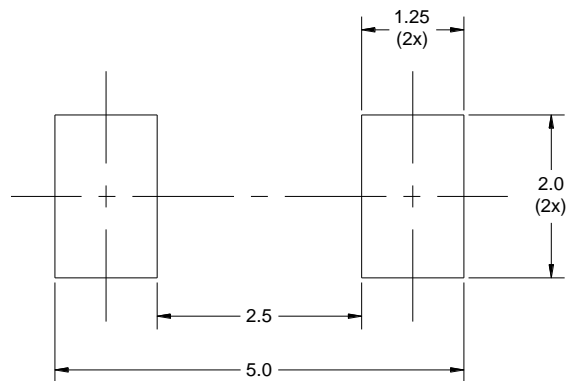
**Figure 2: SOD-123FL Mechanical Outline**



SYMBOL	INCHES		MILLIMETERS	
	MIN	MAX	MIN	MAX
A	0.024	0.031	0.60	0.80
B	0.020	0.028	0.50	0.70
C	0.003	0.007	0.08	0.18
D	0.059	0.067	1.50	1.70
E	0.094	0.110	2.40	2.80
F	0.130	0.146	3.30	3.70
G	0.031	0.039	0.80	1.00

SOD-123FL (REV:R0)

**Figure 3: SOD-80 Mounting Pad Geometry**



(Dimensions in mm)