

Product / Process Change Notice

Parts Affected:

All semiconductor devices currently manufactured in the TLM832D case.

Extent of Change:

The leadframe used to manufacture the TLM832D case has been changed to allow device singularization to be performed by sawing instead of punching.

Reason for Change:

To streamline the manufacturing process, increase the overall throughput, and reduce cost.

Effect of Change:

To distinguish devices manufactured using the sawn leadframe process, an "S" suffix has been added to both the case type and device part #'s. The new case type is identified as TLM832DS.

No electrical differences.

No changes required in PCB layout or mounting.

Qualification:

Standard evaluation and qualifications completed resulting in no performance differences compared to current product.

Effective Date of Change:

March 1, 2012.

Part Numbers Affected:

The status of the existing part numbers listed below will be changed to Discontinued and the replacement devices will begin full production in March 2012.

Existing Part #'s (TLM832D Case)	New Part #'s (TLM832DS Case)
CTLDM7120-M832D	CTLDM7120-M832DS
CTLDM7181-M832D	CTLDM7181-M832DS
CTLDM8120-M832D	CTLDM8120-M832DS
CTLM1034-M832D	CTLM1034-M832DS
CTLM1074-M832D	CTLM1074-M832DS
CTLM3410-M832D	CTLM3410-M832DS
CTLM3474-M832D	CTLM3474-M832DS
CTLM7110-M832D	CTLM7110-M832DS
CTLM7410-M832D	CTLM7410-M832DS
CTLM8110-M832D	CTLM8110-M832DS
CTLSH1-40M832D	CTLSH1-40M832DS
CTLT5551-M832D	CTLT5551-M832DS

Sample Availability:

Please contact Salesperson or Manufacturer's Representative.

Figure 1: TLM832D Mechanical Outline

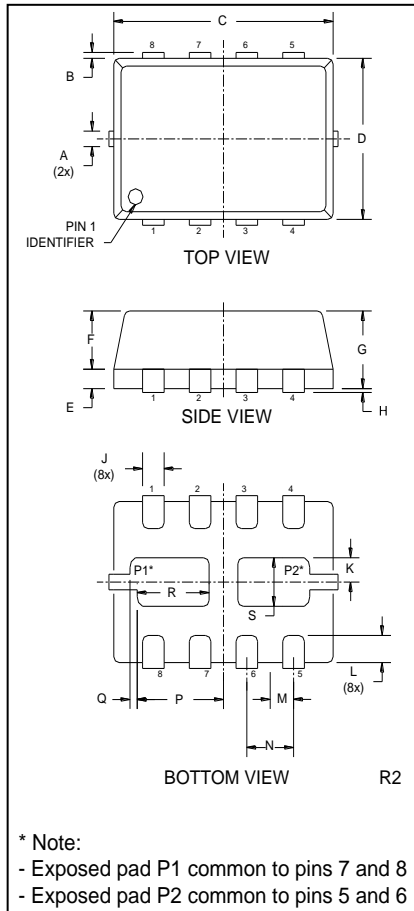
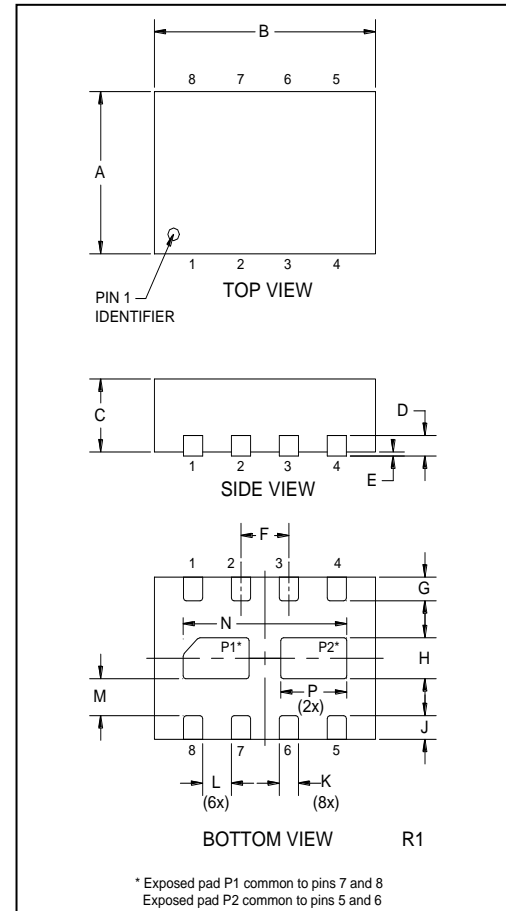


Figure 2: TLM832DS Mechanical Outline



SYMBOL	INCHES		MILLIMETERS	
	MIN	MAX	MIN	MAX
A	0.007	0.012	0.170	0.300
B	-	0.005	-	0.125
C	0.114	0.122	2.900	3.100
D	0.075	0.083	1.900	2.100
E	0.006	0.010	0.150	0.250
F	0.026	0.030	0.650	0.750
G	0.031	0.039	0.800	1.000
H	0.000	0.002	0.000	0.050
J	0.009	0.013	0.240	0.340
K	0.006	0.014	0.160	0.360
L	0.008	0.018	0.200	0.450
M	0.013		0.325	
N	0.026		0.650	
P	0.040	0.048	1.010	1.210
Q	0.004		0.100	
R	0.032	0.040	0.820	1.020
S	0.017	0.025	0.430	0.630

TLM832D (REV: R2)

SYMBOL	INCHES		MILLIMETERS	
	MIN	MAX	MIN	MAX
A	0.077	0.081	1.95	2.05
B	0.116	0.120	2.95	3.05
C	0.031	0.039	0.80	1.00
D	0.006	0.010	0.16	0.25
E	0.000	0.002	0.00	0.05
F	0.026		0.65	
G	0.008	0.016	0.19	0.40
H	0.014	0.024	0.35	0.61
J	0.008	0.016	0.19	0.40
K	0.008	0.012	0.21	0.31
L	0.013	0.017	0.34	0.44
M	0.006	--	0.15	--
N	0.087		2.22	
P	0.029	0.039	0.74	1.00

TLM832DS (REV:R1)