

Test Report

No. TAOEC2303336603

Date: 19 May 2023

Page 1 of 17

Client Name : Taizhou Yourun Electronic Technology Co., Ltd

Client Address : NO.6,Yongfeng Road,Gaogang High-tech Industrial Park,Taizhou,China

Sample Name : Copper frame C19210 KFC

Lot No. : 230429

Main Substance : Cu

Client Ref. Information : SEE ATTACHMENT

The above sample(s) and information were provided by the client.

SGS Job No. : QP23-003473 - QD

SGS Ref No. : 16373162

Date of Sample Received : 15 May 2023

Testing Period : 15 May 2023 - 19 May 2023

Test Requested : Selected test(s) as requested by the client.

Test Method(s) : Please refer to next page(s).

Test Result(s) : Please refer to next page(s).

Result Summary :

Test Requested	Conclusion
EU RoHS Directive (EU) 2015/863 amending Annex II to Directive 2011/65/EU- Lead, Mercury, Cadmium, Hexavalent chromium, Polybrominated biphenyls (PBBs), Polybrominated diphenyl ethers (PBDEs), Bis(2-ethylhexyl) phthalate (DEHP), Butyl benzyl phthalate (BBP), Dibutyl phthalate (DBP) and Diisobutyl phthalate (DIBP)	PASS
Halogen	See Results
Element(s)	See Results
Perfluorooctanesulfonate (PFOS) and its derivatives and Perfluorooctanoic Acid (PFOA) and its salts	See Results



Unless otherwise agreed in writing, this document is issued by the Company subject to its General Conditions of Service printed overleaf, available on request or accessible at <https://www.sgs.com/en/Terms-and-Conditions>. Attention is drawn to the limitation of liability, indemnification and jurisdiction issues defined therein. Any holder of this document is advised that information contained hereon reflects the Company's findings at the time of its intervention only and within the limits of Client's instructions, if any. The Company's sole responsibility is to its Client and this document does not exonerate parties to a transaction from exercising all their rights and obligations under the transaction documents. This document cannot be reproduced except in full, without prior written approval of the Company. Any unauthorized alteration, forgery or falsification of the content or appearance of this document is unlawful and offenders may be prosecuted to the fullest extent of the law.
Attention: To check the authenticity of testing /inspection report & certificate, please contact us at telephone: (86-755) 8307 1443, or email: CN.Doccheck@sgs.com

Test Report

No. TAOEC2303336603

Date: 19 May 2023

Page 2 of 17

Signed for and on behalf of
SGS-CSTC Standards Technical Services (Qingdao) Co., Ltd.



Wang Bo, Claire
Approved Signatory

scan to see the report



2D7276D1



Unless otherwise agreed in writing, this document is issued by the Company subject to its General Conditions of Service printed overleaf, available on request or accessible at <https://www.sgs.com/en/Terms-and-Conditions>. Attention is drawn to the limitation of liability, indemnification and jurisdiction issues defined therein. Any holder of this document is advised that information contained hereon reflects the Company's findings at the time of its intervention only and within the limits of Client's instructions, if any. The Company's sole responsibility is to its Client and this document does not exonerate parties to a transaction from exercising all their rights and obligations under the transaction documents. This document cannot be reproduced except in full, without prior written approval of the Company. Any unauthorized alteration, forgery or falsification of the content or appearance of this document is unlawful and offenders may be prosecuted to the fullest extent of the law.

Attention: To check the authenticity of testing / inspection report & certificate, please contact us at telephone: (86-755) 8307 1443, or email: CN.Doccheck@sgs.com

Test Report

No. TAOEC2303336603

Date: 19 May 2023

Page 3 of 17

Test Result(s) :

Test Part Description :

Specimen No.	SGS Sample ID	Description
SN1	TAO23-033366.004	copper metal

Remarks :

- (1) 1 mg/kg = 0.0001%
- (2) MDL = Method Detection Limit
- (3) ND = Not Detected (< MDL)
- (4) "-" = Not Regulated

EU RoHS Directive (EU) 2015/863 amending Annex II to Directive 2011/65/EU- Lead, Mercury, Cadmium, Hexavalent chromium, Polybrominated biphenyls (PBBs), Polybrominated diphenyl ethers (PBDEs), Bis(2-ethylhexyl) phthalate (DEHP), Butyl benzyl phthalate (BBP), Dibutyl phthalate (DBP) and Diisobutyl phthalate (DIBP)

Test Method : With reference to IEC 62321-5:2013, IEC 62321-4:2013+AMD1:2017, IEC 62321-7-1:2015, IEC 62321-6:2015 and IEC62321-8:2017, analyzed by ICP-OES,AAS, UV-Vis and GC-MS.

Test Item(s)	Limit	Unit	MDL	004
Cadmium (Cd)	100	mg/kg	2	ND
Lead (Pb)	1000	mg/kg	2	4
Mercury (Hg)	1000	mg/kg	2	ND
Hexavalent Chromium (Cr(VI))▼	-	µg/cm ²	0.10	ND
Sum of PBBs	1000	mg/kg	-	ND
Monobromobiphenyl	-	mg/kg	5	ND
Dibromobiphenyl	-	mg/kg	5	ND
Tribromobiphenyl	-	mg/kg	5	ND
Tetrabromobiphenyl	-	mg/kg	5	ND
Pentabromobiphenyl	-	mg/kg	5	ND
Hexabromobiphenyl	-	mg/kg	5	ND
Heptabromobiphenyl	-	mg/kg	5	ND
Octabromobiphenyl	-	mg/kg	5	ND
Nonabromobiphenyl	-	mg/kg	5	ND
Decabromobiphenyl	-	mg/kg	5	ND
Sum of PBDEs	1000	mg/kg	-	ND
Monobromodiphenyl ether	-	mg/kg	5	ND
Dibromodiphenyl ether	-	mg/kg	5	ND
Tribromodiphenyl ether	-	mg/kg	5	ND
Tetrabromodiphenyl ether	-	mg/kg	5	ND



Unless otherwise agreed in writing, this document is issued by the Company subject to its General Conditions of Service printed overleaf, available on request or accessible at <https://www.sgs.com/en/Terms-and-Conditions>. Attention is drawn to the limitation of liability, indemnification and jurisdiction issues defined therein. Any holder of this document is advised that information contained hereon reflects the Company's findings at the time of its intervention only and within the limits of Client's instructions, if any. The Company's sole responsibility is to its Client and this document does not exonerate parties to a transaction from exercising all their rights and obligations under the transaction documents. This document cannot be reproduced except in full, without prior written approval of the Company. Any unauthorized alteration, forgery or falsification of the content or appearance of this document is unlawful and offenders may be prosecuted to the fullest extent of the law.

Attention: To check the authenticity of testing /inspection report & certificate, please contact us at telephone: (86-755) 8307 1443, or email: CN.Doccheck@sgs.com

Test Report

No. TAOEC2303336603

Date: 19 May 2023

Page 4 of 17

<u>Test Item(s)</u>	<u>Limit</u>	<u>Unit</u>	<u>MDL</u>	<u>004</u>
Pentabromodiphenyl ether	-	mg/kg	5	ND
Hexabromodiphenyl ether	-	mg/kg	5	ND
Heptabromodiphenyl ether	-	mg/kg	5	ND
Octabromodiphenyl ether	-	mg/kg	5	ND
Nonabromodiphenyl ether	-	mg/kg	5	ND
Decabromodiphenyl ether	-	mg/kg	5	ND
Dibutyl phthalate (DBP)	1000	mg/kg	50	ND
Butyl benzyl phthalate (BBP)	1000	mg/kg	50	ND
Bis (2-ethylhexyl) phthalate (DEHP)	1000	mg/kg	50	ND
Diisobutyl Phthalates (DIBP)	1000	mg/kg	50	ND

Notes :

- (1) The maximum permissible limit is quoted from RoHS Directive (EU) 2015/863.
- (2) IEC 62321 series is equivalent to EN 62321 series
- (3) ▼ = a. The sample is positive for CrVI if the CrVI concentration is greater than 0.13 µg/cm². The sample coating is considered to contain CrVI
 - b. The sample is negative for CrVI if CrVI is ND (concentration less than 0.10 µg/cm²). The coating is considered a non-CrVI based coating
 - c. The result between 0.10 µg/cm² and 0.13 µg/cm² is considered to be inconclusive - unavoidable coating variations may influence the determination

Information on storage conditions and production date of the tested sample is unavailable and thus Cr(VI) results represent status of the sample at the time of testing.

- (4) The restriction of DEHP, BBP, DBP and DIBP shall apply to medical devices, including in vitro medical devices, and monitoring and control instruments, including industrial monitoring and control instruments, from 22 July 2021.

Halogen

Test Method : With reference to EN 14582: 2016, analysis was performed by Ion Chromatograph (IC).

<u>Test Item(s)</u>	<u>Unit</u>	<u>MDL</u>	<u>004</u>
Fluorine (F)	mg/kg	20	ND
Chlorine (Cl)	mg/kg	50	ND
Bromine (Br)	mg/kg	50	ND
Iodine (I)	mg/kg	50	ND

Element(s)

Test Method : With reference to US EPA Method 3050B:1996, analysis was performed by ICP-OES.



Unless otherwise agreed in writing, this document is issued by the Company subject to its General Conditions of Service printed overleaf, available on request or accessible at <https://www.sgs.com/en/Terms-and-Conditions>. Attention is drawn to the limitation of liability, indemnification and jurisdiction issues defined therein. Any holder of this document is advised that information contained hereon reflects the Company's findings at the time of its intervention only and within the limits of Client's instructions, if any. The Company's sole responsibility is to its Client and this document does not exonerate parties to a transaction from exercising all their rights and obligations under the transaction documents. This document cannot be reproduced except in full, without prior written approval of the Company. Any unauthorized alteration, forgery or falsification of the content or appearance of this document is unlawful and offenders may be prosecuted to the fullest extent of the law.

Attention: To check the authenticity of testing /inspection report & certificate, please contact us at telephone: (86-755) 8307 1443, or email: CN.Doccheck@sgs.com

Test Item(s)	Unit	MDL	004
Antimony (Sb)	mg/kg	10	ND
Phosphorus (P)	mg/kg	20	347
Beryllium (Be)	mg/kg	5	ND

Perfluorooctanesulfonate (PFOS) and its derivatives and Perfluorooctanoic Acid (PFOA) and its salts

Test Method : With reference to CEN/TS 15968:2010, analysis was performed by LC- MS-MS.

Test Item(s)	CAS NO.	Unit	MDL	004
Perfluorooctanesulfonate (PFOS) and its derivatives	-	mg/kg	-	ND
Perfluorooctane Sulfonates (PFOS)^	1763-23-1	mg/kg	0.01	ND
N-ethylperfluoro-1-octanesulfonamide (EtFOSA)	4151-50-2	mg/kg	0.01	ND
2-(N-ethylperfluoro-1-octanesulfonamido)-ethanol (EtFOSE)	1691-99-2	mg/kg	0.01	ND
N-methylperfluoro-1-octanesulfonamide (MeFOSA)	31506-32-8	mg/kg	0.01	ND
2-(N-methylperfluoro- 1-octanesulfonamido) -ethanol (MeFOSE)	24448-09-7	mg/kg	0.01	ND
Perfluorooctane sulfonamide (PFOSA)	754-91-6	mg/kg	0.01	ND
Perfluorooctanoic Acid (PFOA) and its salts+		mg/kg	0.01	ND

Notes :

(1) ^ PFOS refer to its acid, salts/derivatives including PFOS (CAS No.: 1763-23-1) , PFOS-K (CAS No.: 2795-39-3) , PFOS-Li (CAS No.: 29457-72-5), PFOS-NH4 (CAS No.: 29081-56-9), PFOS-NH(OH)2 (CAS No.: 70225-14-8) and PFOS-N(C2H5)4 (CAS No.: 56773-42-3), PFOS-N(CH3)2(C10H21)2 (CAS No.:251099-16-8) and POSF (CAS No.: 307-35-7).

(2) PFOA and its salts+ refer to its acid / salts including PFOA (CAS No.: 335-67-1), PFOA-Na (CAS No.: 335-95-5), PFOA-K (CAS No.: 2395-00-8), PFOA-Ag (CAS No.: 335-93-3), PFOA-F (CAS No.: 335-66-0) and APFO (CAS No.: 3825-26-1)

Unless otherwise stated, the decision rule for conformity reporting is based on Binary Statement for Simple Acceptance Rule (w=0) stated in ILAC-G8:09/2019.



Unless otherwise agreed in writing, this document is issued by the Company subject to its General Conditions of Service printed overleaf, available on request or accessible at <https://www.sgs.com/en/Terms-and-Conditions>. Attention is drawn to the limitation of liability, indemnification and jurisdiction issues defined therein. Any holder of this document is advised that information contained hereon reflects the Company's findings at the time of its intervention only and within the limits of Client's instructions, if any. The Company's sole responsibility is to its Client and this document does not exonerate parties to a transaction from exercising all their rights and obligations under the transaction documents. This document cannot be reproduced except in full, without prior written approval of the Company. Any unauthorized alteration, forgery or falsification of the content or appearance of this document is unlawful and offenders may be prosecuted to the fullest extent of the law.
Attention: To check the authenticity of testing /inspection report & certificate, please contact us at telephone: (86-755) 8307 1443, or email: CN.Doccheck@sgs.com

ATTACHMENT

TO-247-3L	TO-220AB
TO-220FH	TO-220FW
TO-220F-2L	TO-220MF
TO-263NB-5L	TO-220SF
TO-220C	TO-220CB
TO-220H	TO-220F
TO-220FG	TO-220HF
TO-220FW-2L	TO-220SD
TO-220SM	TO-220EW
TO-220M-1	TO-220W
TO-220HR	TO-220HJ
TO-220HW	TO-220F-5L
TO-220B5	TO-220B7
TO-220FHD	TO-220FHT
TO-220C7	TO-220FG
TO-220SM2	TO-220CT
TO-220FB-LP-3L	TO-220FHM.1-3L
TO-220FHM.2-3L	TO-220FM.2-3L
TO-220FHM.1-2L	TO-220FP
YTO-220HR	TO-220HJ-D
TO-220F2	TO-220HB
TO-220WF-SG-3L	TO-220NB-5L
TO-220SF-3L	TO-220MF-SG-3L
TO-220MF-DG-3L	TO-220AB-DG
TO-220-5L	TO-220F4
TO-220 NEW B5	TO-220
TO-220-F-C	TO-220MF-3L
TO-220S	TO-263-3L
TO-263-5L	TO-263-5H
TO-263-3A	TO-263HY-3L
TO-220HY-3L	TO-263-DU
TO-3PB-1	TO-3PB-2
TO-3PB	TO-3PF
TO-3PH	TO-3PS
TO-3PL	TO-3P
TO-3PM-3L	TO-3PM-3S
TO-3PN	TO-3PB-2L
TO-3P-3L	TO-264
TO-262F	TO-247-2L
TO-247(B-2L)	TO-126
TO-126S	TO-126D
TO-126T	TO-126A
TO-202B	TO-251
YTO-251K	YTO-251
YTO-251C	TO-252A
TO-271	TO-92
TO-92S	TO-2087
TO-92(2086)	TO-92SB
FDIP15	FSIP12



Unless otherwise agreed in writing, this document is issued by the Company subject to its General Conditions of Service printed overleaf, available on request or accessible at <https://www.sgs.com/en/Terms-and-Conditions>. Attention is drawn to the limitation of liability, indemnification and jurisdiction issues defined therein. Any holder of this document is advised that information contained hereon reflects the Company's findings at the time of its intervention only and within the limits of Client's instructions, if any. The Company's sole responsibility is to its Client and this document does not exonerate parties to a transaction from exercising all their rights and obligations under the transaction documents. This document cannot be reproduced except in full, without prior written approval of the Company. Any unauthorized alteration, forgery or falsification of the content or appearance of this document is unlawful and offenders may be prosecuted to the fullest extent of the law.

Attention: To check the authenticity of testing /inspection report & certificate, please contact us at telephone: (86-755) 8307 1443, or email: CN.Doccheck@sgs.com

Test Report

No. TAOEC2303336603

Date: 19 May 2023

Page 7 of 17

TDA-15	FZIP15
TMB	TB-4
DIP-8L/7L	SOP-8L
FDIP18-1LD	6PIN
SOT-23A1	DIP4L(EIR,EPT)
DIP-A	DIP-B
NIPAK	GBU-16 FRAME
CBU-16 FRAME	KBJ4-16 FRAME
KBJ4-16 JUMPER	KBJ6-12 FRAME
KBJ6-12 JUMPER	GBS-24 FRAME
GBS-24 JUMPER	KBJ2-16 FRAME
KBJ2-16JUMPER	TO-220AB-7L
TO-263-7L. YTO-126C	YTO-126CL
TO-220HJ-D-A	YTO-251A
YTO-251(252)-4R	TO-220AB-M
TO-220NF-DG-3L	TO-220MF-DG-LP
YTO-251D	TO-220HK
SOT-23-6R	TO-3PG
TO-220HWJ	TO-220AC
SOT-23	IPAK-LP
DPAK	YTO-220HJ-E
YTO-220HJ-F	TO-220-3L
TO-220-2L	TO-263T-3L
TO-262A	TO-220S TO-252-3D
TO-220MA	TO-220MF-K1-3L
TO-263AB	TO-263AB-M
TO-220E	TO-263E
TO-220HBK	TO-220HB
TO-263US-7L	TO-220IR
TO-220	TO-263
TO-220AB-DU	TO-263-DU
TO-220TF-3L	TO-220TF-2L
TO-220AB-V0	TO-220AC-V0
TO-263-V0	TO-263-V1
TO-220AB-2L-M	TO-220B-5L(PT)
TO-220F DOUBLE ROW	TO-220DOUBLE ROW
TO-263DOUBLE ROW	TO-220AB/220AB-DU-3L
TO-263/263DU-3L	IPAK/IPAK-LP
PDFN CLIP	247 CLIP
SPM-001-06	CLIP
SPM CLIP	PDFN-8L-8R
SMF	TO-263NB-DP-5L
TO-220NB-DP-5L	TO-220D7L
TO-220MF-DG-2L	TO-220MF-DGLP-2L
TO-220MF-SG-2L	FZIP15
TO-220FZ	TO-220FD
TO-220A HEAD	TO-220A FOOT
TO-247 Plus	TO-220AB-DU-2L
TO-220AC-2L	TO-220AB DOUBLE ROW
TO-263US-7L	TO-220HJS
TO-247-4L	TO-220-3L-001



Unless otherwise agreed in writing, this document is issued by the Company subject to its General Conditions of Service printed overleaf, available on request or accessible at <https://www.sgs.com/en/Terms-and-Conditions>. Attention is drawn to the limitation of liability, indemnification and jurisdiction issues defined therein. Any holder of this document is advised that information contained hereon reflects the Company's findings at the time of its intervention only and within the limits of Client's instructions, if any. The Company's sole responsibility is to its Client and this document does not exonerate parties to a transaction from exercising all their rights and obligations under the transaction documents. This document cannot be reproduced except in full, without prior written approval of the Company. Any unauthorized alteration, forgery or falsification of the content or appearance of this document is unlawful and offenders may be prosecuted to the fullest extent of the law.

Attention: To check the authenticity of testing /inspection report & certificate, please contact us at telephone: (86-755) 8307 1443, or email: CN.Doccheck@sgs.com

Test Report

No. TAOEC2303336603

Date: 19 May 2023

Page 8 of 17

TO-220-3L-002	TO-263-3L-001
TO-263-3L-002	TO-220BTA(HEAD)
TO-220BTA(FOOT)	YTO-251-2L
FZIP15	MBL-BRIDGE
TO-263-7L-001	TO-263-7L-002
TO-263-7L-003	TO-IPAK/IPAK-LP
TO-220AB/220AB-DU-3L	TO-263/263DU-3L
TO-220MF-DG/DGLP-3L	TO-252-3L-1
TO-252-3L-1	TO-220(Thick)-3-1
TO-263-3-2 LC	TO-263-3-2 YR
TO-263-3-6 LC	TO-263-3-6 YR
TO-220-3-2 LC	TO-220-3-2 YR
TO-220-3-6 LC	TO-220-3-6 YR
TO-247AC-V0	TO-247AB-V0
TO-262-3L	TO-262-2L
TO-220AB-2L	TO-263-2L
TO-263CM	TO-220CM
TO-263M	TO-220FAC
TO-220FAB	CLIP-PPAK5*6-001
CLIP-PPAK5*6-002	CLIP-PPAK5*6-003
CLIP-PPAK5*6-004	CLIP-PPAK5*6-005
CLIP-PPAK5*6-006	CLIP-PPAK5*6-007
CLIP-PPAK5*6-008	CLIP-PPAK5*6-009
CLIP-PPAK5*6-010	CLIP-PPAK5*6-011
CLIP-PPAK5*6-012	CLIP-PPAK5*6-013
CLIP-PPAK5*6-014	CLIP-PPAK5*6-015
CLIP-PPAK5*6-016	CLIP-PPAK5*6-017
CLIP-PPAK5*6-018	CLIP-PPAK5*6-019
CLIP-PPAK5*6-020	TO-252-3LB-4R-3
TO-2523L(B)-4R-1	TO-220-9L
TO-252-5L-4P	TO-220AB-F
TO-220AB-L	TO-263-LP-3L
TO-220HJH	TO-220HJA
DFDN (5 * 6) with Clip Copper Strip-30v	DFDN (5 * 6) with Clip Copper Strip-40v
TO-220HJ-GAN	TO-247K
TO-247-3L-005	TO-247-3L-006
SOT089-3L(66.9*63)-14P	SOT89-5L(85X70)-14P
PPAK-001	PPAK-002
PPAK-003	SOP-8L-005
SOP-8L-003	263-3L-7
TO-220FB3-A	TO-262(SI)
TO-251(252)-4A	TO-220IX
TO-263-7A	TO-263-7B
TO-263-3L-LF	TO-263LP-3L
TO-263LV-7L	TO-263US-7P
TO-263-V0	TO-263-V1
TO-220AB-V1	TO-220AB-V0
TO-263-V0 double row	TO-247AB-V0
TO-247AC-V1	TO-220AC-V0
TO-220AB-V1	SOT-23-2J
TO-263HWJ	TO-247P



Unless otherwise agreed in writing, this document is issued by the Company subject to its General Conditions of Service printed overleaf, available on request or accessible at <https://www.sgs.com/en/Terms-and-Conditions>. Attention is drawn to the limitation of liability, indemnification and jurisdiction issues defined therein. Any holder of this document is advised that information contained hereon reflects the Company's findings at the time of its intervention only and within the limits of Client's instructions, if any. The Company's sole responsibility is to its Client and this document does not exonerate parties to a transaction from exercising all their rights and obligations under the transaction documents. This document cannot be reproduced except in full, without prior written approval of the Company. Any unauthorized alteration, forgery or falsification of the content or appearance of this document is unlawful and offenders may be prosecuted to the fullest extent of the law.

Attention: To check the authenticity of testing / inspection report & certificate, please contact us at telephone: (86-755) 8307 1443, or email: CN.Doccheck@sgs.com

Test Report

No. TAOEC2303336603

Date: 19 May 2023

Page 9 of 17

TO-220CB-3L-A	220CB-3L-B
220CB-3L-C	220CB-3L-D
TO-252-3L-A	TO-252-3L-B
TO-252-3L-C	TO-252-3L-D
TO-3P-3L	TO-220HBH
TO-220B-7L	TO-247H-3L
TO-247PLUS-3L	TO-247P
TO-247-1	TO-220CB-2L
MBL-Bridge	TO-263CB-3L
TO-220HBH	PDFN5X6 Clip-11
TO-262HW	TO-263HW
SOT89-3L(66.9X63)	SOT89-5L(85X70)-14P
TO-252-5L(173X132)-4p	TO-252-5L(176X121)-4P
TO-252-5L-4P	TO-263(T)-3L-001
TO-247X-3L-001	TO-247-3L-007
TO-220FB3-A	3VT163030GY-12
TO263-3-01	TO263-3-01 KFC-PSS268*224-1
TO263-3-01 KFC-GSS268*224-2	TO263-3-01 KFC-BSS268*224-2
TO263-3-01 KFC-GSS268*224-1	TO263-3-01 KFC-BSS268*224-1
TO220-3-03	FRAMETO220-3-03 KFC-PSS317*234-1
FRAMETO220-3-03 KFC-BSS317*234-1	FRAMETO220-3-02 KFC-BSS317*234-1
FRAMETO220-3-02 KFC-GSS317*234-1	FRAMETO220-3-02 KFC-PSS317*234-1
TO220-3-02	FRAMETO220-3-04 KFC-BSS271*204-1
TO220-3-04	FRAMETO220F-2-01 KFC-BSS276*228-1
FRAMETO220F-2-01KFC-NSS276*228-1	FRAMETO220F-3-01 KFC-BSS272*224-1
FRAMETO220F-3-01 KFC-GSS272*224-1	FRAMETO220F-3-01 KFC-PSS272*224-1
TO220F-3-01	TO220F-2-01
TO263-7-01	TO263-7-02
TO247-2-01	TO247-2-01 KFC-BSS492*292-1
TO263-2-01	TO263-2-01 KFC-BSS268*226-1
TO263-2-01 KFC-NSS268*226-1	TO263-3-01
TO247-3-01	TO247-4-01
TO247PLUS-3-01	TO-263LV-7L
I-TO-263-07-218	I-TO-263-03-217
I-TO-247AC-03-511	I-TO-263-07-219
TO-220-3L-01(YJ)	Super-To220V0
TO-252-2L-V0	TO-220FD
TO-263-4L	TO-247
SOT(TO) FRAME	SOT
SOP	DIP
PDFN	TSSOP
SSOP FRAME	

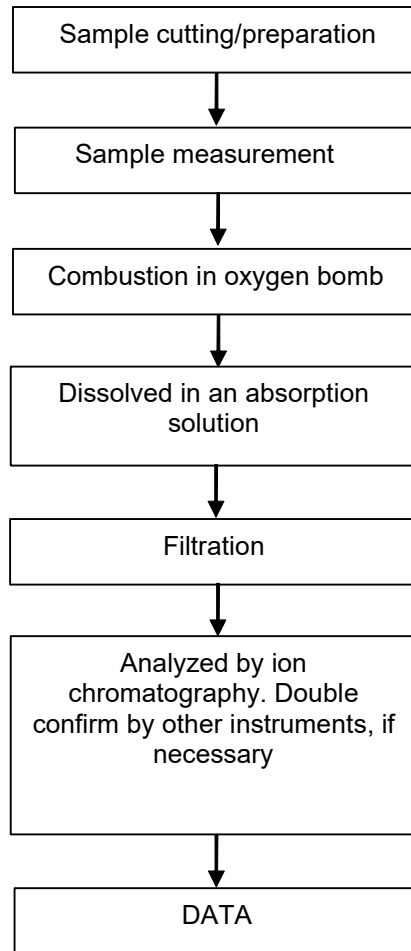


Unless otherwise agreed in writing, this document is issued by the Company subject to its General Conditions of Service printed overleaf, available on request or accessible at <https://www.sgs.com/en/Terms-and-Conditions>. Attention is drawn to the limitation of liability, indemnification and jurisdiction issues defined therein. Any holder of this document is advised that information contained hereon reflects the Company's findings at the time of its intervention only and within the limits of Client's instructions, if any. The Company's sole responsibility is to its Client and this document does not exonerate parties to a transaction from exercising all their rights and obligations under the transaction documents. This document cannot be reproduced except in full, without prior written approval of the Company. Any unauthorized alteration, forgery or falsification of the content or appearance of this document is unlawful and offenders may be prosecuted to the fullest extent of the law.

Attention: To check the authenticity of testing / inspection report & certificate, please contact us at telephone: (86-755) 8307 1443, or email: CN.Doccheck@sgs.com

ATTACHMENTS

Halogen Testing Flow Chart

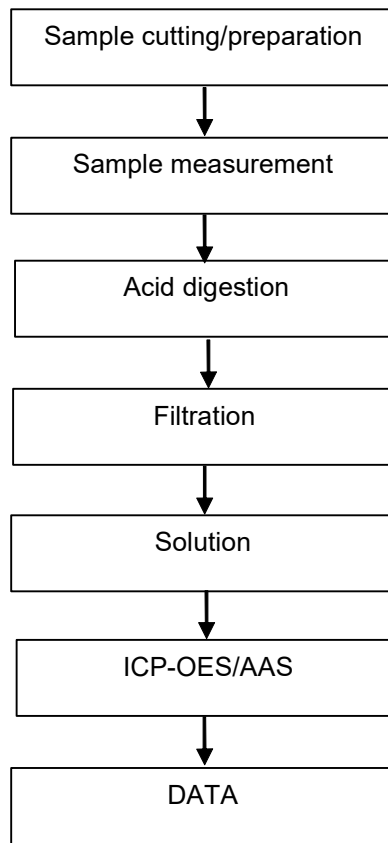


Unless otherwise agreed in writing, this document is issued by the Company subject to its General Conditions of Service printed overleaf, available on request or accessible at <https://www.sgs.com/en/Terms-and-Conditions>. Attention is drawn to the limitation of liability, indemnification and jurisdiction issues defined therein. Any holder of this document is advised that information contained hereon reflects the Company's findings at the time of its intervention only and within the limits of Client's instructions, if any. The Company's sole responsibility is to its Client and this document does not exonerate parties to a transaction from exercising all their rights and obligations under the transaction documents. This document cannot be reproduced except in full, without prior written approval of the Company. Any unauthorized alteration, forgery or falsification of the content or appearance of this document is unlawful and offenders may be prosecuted to the fullest extent of the law.

Attention: To check the authenticity of testing /inspection report & certificate, please contact us at telephone: (86-755) 8307 1443, or email: CN.Doccheck@sgs.com

ATTACHMENTS

Elementary Testing Flow Chart

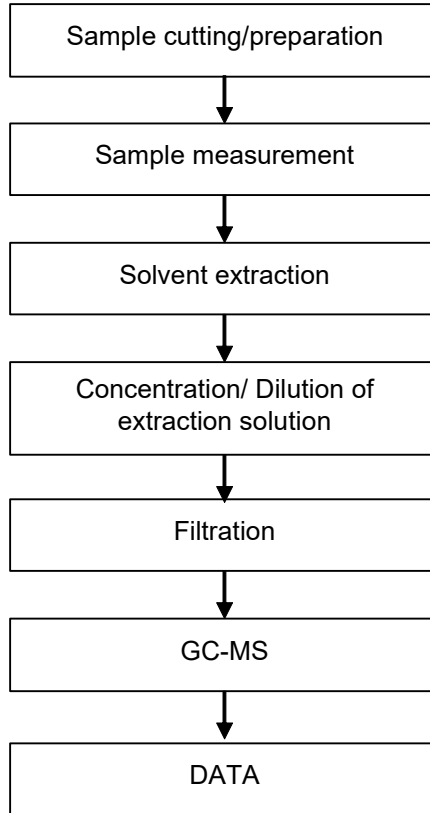


Unless otherwise agreed in writing, this document is issued by the Company subject to its General Conditions of Service printed overleaf, available on request or accessible at <https://www.sgs.com/en/Terms-and-Conditions>. Attention is drawn to the limitation of liability, indemnification and jurisdiction issues defined therein. Any holder of this document is advised that information contained hereon reflects the Company's findings at the time of its intervention only and within the limits of Client's instructions, if any. The Company's sole responsibility is to its Client and this document does not exonerate parties to a transaction from exercising all their rights and obligations under the transaction documents. This document cannot be reproduced except in full, without prior written approval of the Company. Any unauthorized alteration, forgery or falsification of the content or appearance of this document is unlawful and offenders may be prosecuted to the fullest extent of the law.

Attention: To check the authenticity of testing /inspection report & certificate, please contact us at telephone: (86-755) 8307 1443, or email: CN.Doccheck@sgs.com

ATTACHMENTS

PBBs/PBDEs Testing Flow Chart

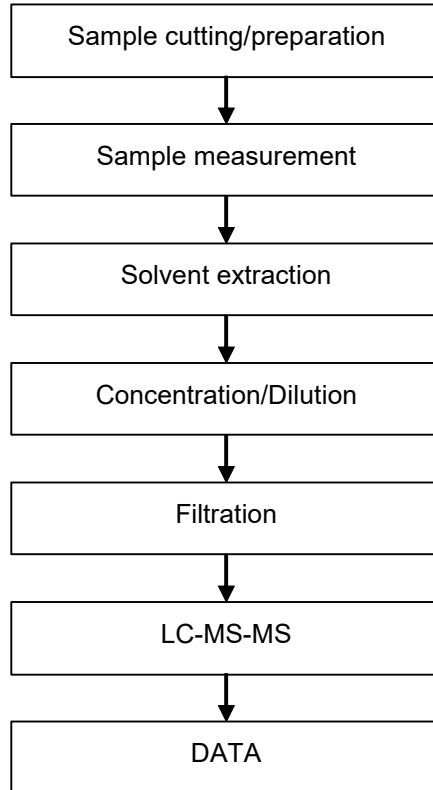


Unless otherwise agreed in writing, this document is issued by the Company subject to its General Conditions of Service printed overleaf, available on request or accessible at <https://www.sgs.com/en/Terms-and-Conditions>. Attention is drawn to the limitation of liability, indemnification and jurisdiction issues defined therein. Any holder of this document is advised that information contained hereon reflects the Company's findings at the time of its intervention only and within the limits of Client's instructions, if any. The Company's sole responsibility is to its Client and this document does not exonerate parties to a transaction from exercising all their rights and obligations under the transaction documents. This document cannot be reproduced except in full, without prior written approval of the Company. Any unauthorized alteration, forgery or falsification of the content or appearance of this document is unlawful and offenders may be prosecuted to the fullest extent of the law.

Attention: To check the authenticity of testing /inspection report & certificate, please contact us at telephone: (86-755) 8307 1443, or email: CN.Doccheck@sgs.com

ATTACHMENTS

PFOS/PFOA Testing Flow Chart

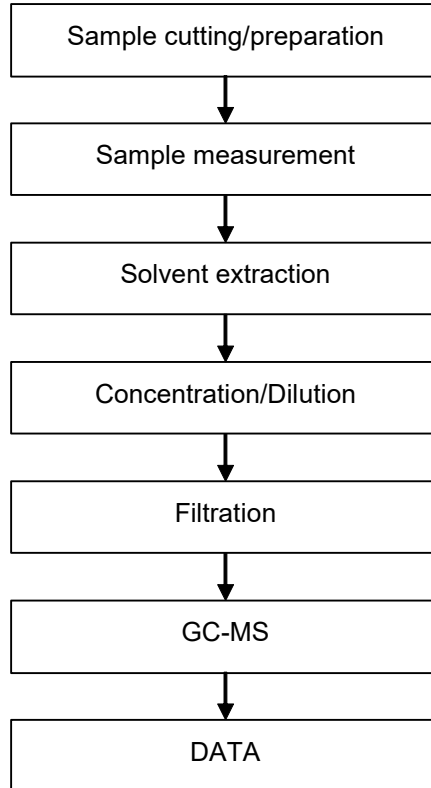


Unless otherwise agreed in writing, this document is issued by the Company subject to its General Conditions of Service printed overleaf, available on request or accessible at <https://www.sgs.com/en/Terms-and-Conditions>. Attention is drawn to the limitation of liability, indemnification and jurisdiction issues defined therein. Any holder of this document is advised that information contained hereon reflects the Company's findings at the time of its intervention only and within the limits of Client's instructions, if any. The Company's sole responsibility is to its Client and this document does not exonerate parties to a transaction from exercising all their rights and obligations under the transaction documents. This document cannot be reproduced except in full, without prior written approval of the Company. Any unauthorized alteration, forgery or falsification of the content or appearance of this document is unlawful and offenders may be prosecuted to the fullest extent of the law.

Attention: To check the authenticity of testing /inspection report & certificate, please contact us at telephone: (86-755) 8307 1443, or email: CN.Doccheck@sgs.com

ATTACHMENTS

Phthalates Testing Flow Chart

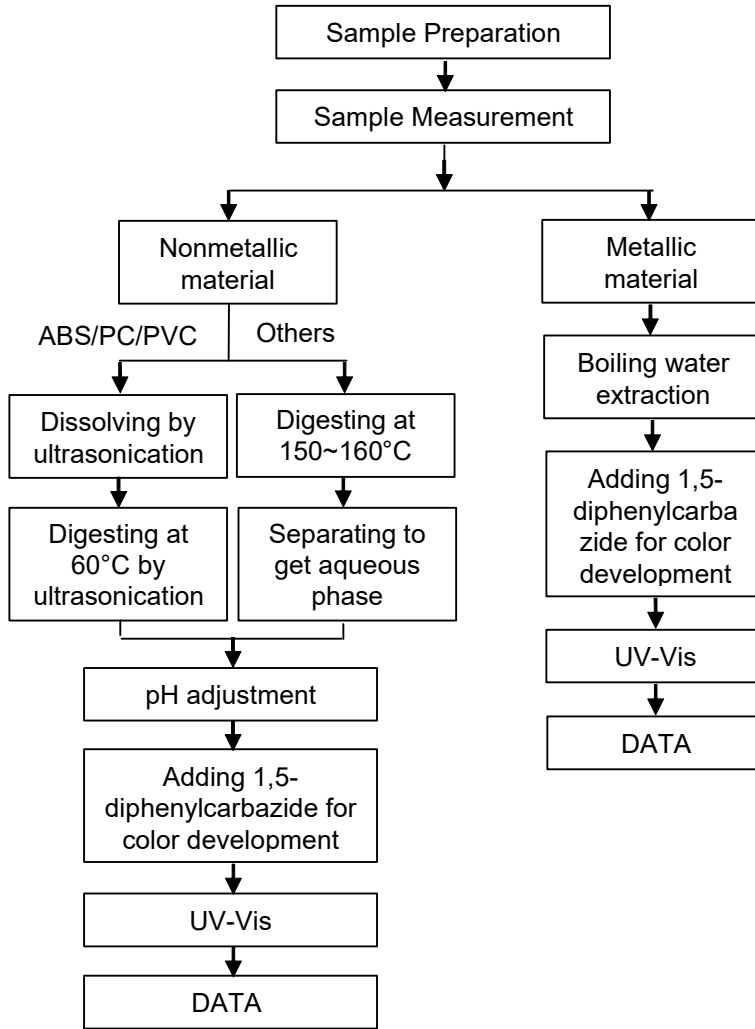


Unless otherwise agreed in writing, this document is issued by the Company subject to its General Conditions of Service printed overleaf, available on request or accessible at <https://www.sgs.com/en/Terms-and-Conditions>. Attention is drawn to the limitation of liability, indemnification and jurisdiction issues defined therein. Any holder of this document is advised that information contained hereon reflects the Company's findings at the time of its intervention only and within the limits of Client's instructions, if any. The Company's sole responsibility is to its Client and this document does not exonerate parties to a transaction from exercising all their rights and obligations under the transaction documents. This document cannot be reproduced except in full, without prior written approval of the Company. Any unauthorized alteration, forgery or falsification of the content or appearance of this document is unlawful and offenders may be prosecuted to the fullest extent of the law.

Attention: To check the authenticity of testing /inspection report & certificate, please contact us at telephone: (86-755) 8307 1443, or email: CN.Doccheck@sgs.com

ATTACHMENTS

Hexavalent Chromium (Cr(VI)) Testing Flow Chart



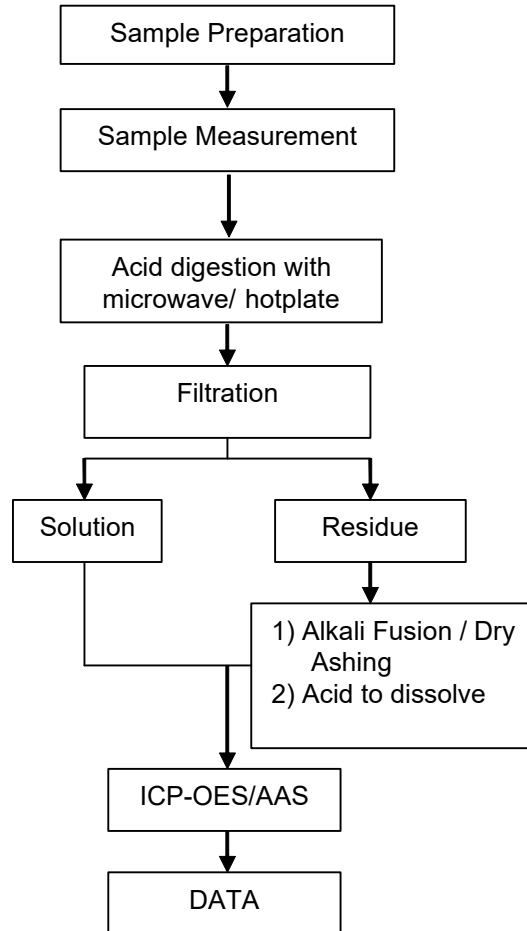
Unless otherwise agreed in writing, this document is issued by the Company subject to its General Conditions of Service printed overleaf, available on request or accessible at <https://www.sgs.com/en/Terms-and-Conditions>. Attention is drawn to the limitation of liability, indemnification and jurisdiction issues defined therein. Any holder of this document is advised that information contained hereon reflects the Company's findings at the time of its intervention only and within the limits of Client's instructions, if any. The Company's sole responsibility is to its Client and this document does not exonerate parties to a transaction from exercising all their rights and obligations under the transaction documents. This document cannot be reproduced except in full, without prior written approval of the Company. Any unauthorized alteration, forgery or falsification of the content or appearance of this document is unlawful and offenders may be prosecuted to the fullest extent of the law.

Attention: To check the authenticity of testing /inspection report & certificate, please contact us at telephone: (86-755) 8307 1443, or email: CN.Doccheck@sgs.com

ATTACHMENTS

Elements (IEC62321) Testing Flow Chart

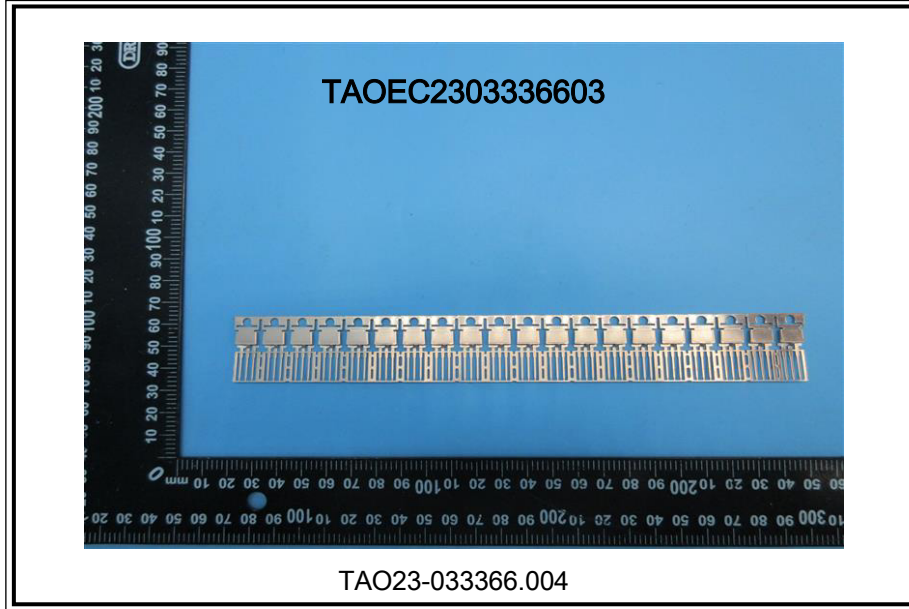
1) These samples were dissolved totally by pre-conditioning method according to below flow chart.



Unless otherwise agreed in writing, this document is issued by the Company subject to its General Conditions of Service printed overleaf, available on request or accessible at <https://www.sgs.com/en/Terms-and-Conditions>. Attention is drawn to the limitation of liability, indemnification and jurisdiction issues defined therein. Any holder of this document is advised that information contained hereon reflects the Company's findings at the time of its intervention only and within the limits of Client's instructions, if any. The Company's sole responsibility is to its Client and this document does not exonerate parties to a transaction from exercising all their rights and obligations under the transaction documents. This document cannot be reproduced except in full, without prior written approval of the Company. Any unauthorized alteration, forgery or falsification of the content or appearance of this document is unlawful and offenders may be prosecuted to the fullest extent of the law.

Attention: To check the authenticity of testing /inspection report & certificate, please contact us at telephone: (86-755) 8307 1443, or email: CN.Doccheck@sgs.com

Sample photo:



SGS authenticate the photo on original report only

*** End of Report ***

