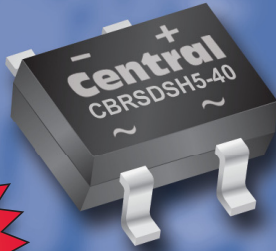


Simplify your design

World's first surface mount
5A, 40V Schottky
Bridge Rectifier

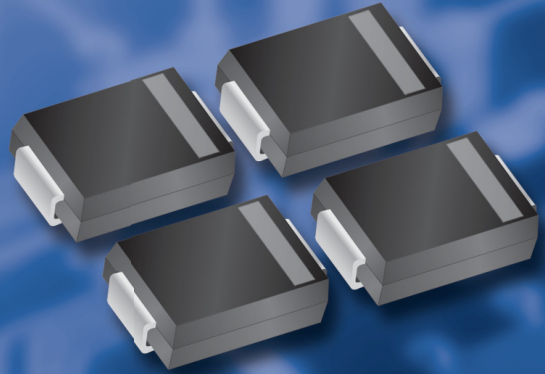


Space Saving & Energy Efficient



SMDIP package

or





4 x SMC packages

CBRSDSH5-40

The Central Semiconductor CBRSDSH5-40 is the newest member of the surface mount Schottky bridge rectifier family, ideal for a broad range of power management applications.

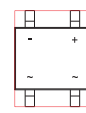
Schottky Bridge Rectifiers

	Central Part No.	V _{RRM} (MAX)	V _F @ I _F (TYP)	I _R @ V _{RRM} (MAX)	Package Type L x W x H
5 Amp	CBRSDSH5-40	40V	0.37V @ 1.0A 0.40V @ 2.0A 0.43V @ 3.0A 0.46V @ 4.0A 0.50V @ 5.0A	70µA	 SMDIP 8.51 x 10.41 x 2.49
2 Amp	CBRHDSH2-40 CBRHDSH2-100	40V 100V	0.45V @ 2.0A 0.77V @ 2.0A	50µA 4.0µA	
1 Amp	CBRHDSH1-40L CBRHDSH1-100	40V 100V	0.39V @ 1.0A 0.70V @ 1.0A	50µA 10µA	HD DIP 4.9 x 7.0 x 2.7

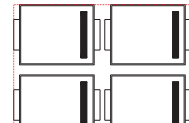
Dimensions shown are maximum values in mm.

Less is more

- Utilizes **56%** less board space
(Compared with 4 SMC devices)



SMDIP package



4 x SMC packages

- Energy Efficient Device

$$V_F = 0.37V @ 1.0A$$

$$I_R = 70\mu A @ 40V$$

Request your samples today



Call 631-435-1110 or visit:
www.centrasemi.com/sbr6



Schottky Bridge Rectifiers

Small Signal Transistors

Bipolar Power Transistors

Energy Efficient Devices

Rectifiers

MOSFETs

Diodes

CentralTM
Semiconductor Corp.

www.centrasemi.com