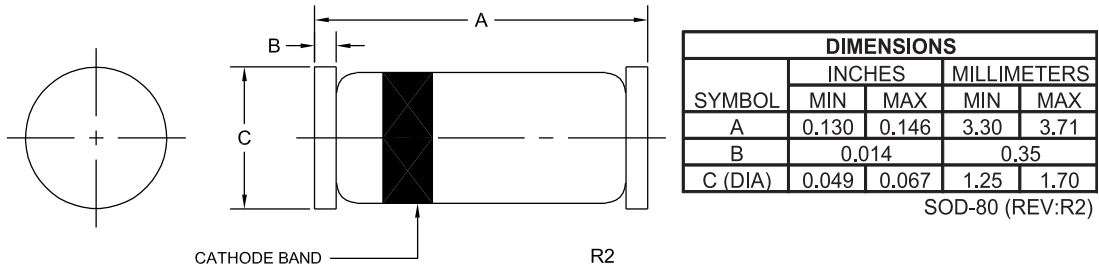


Package Details
SOD-80 Case

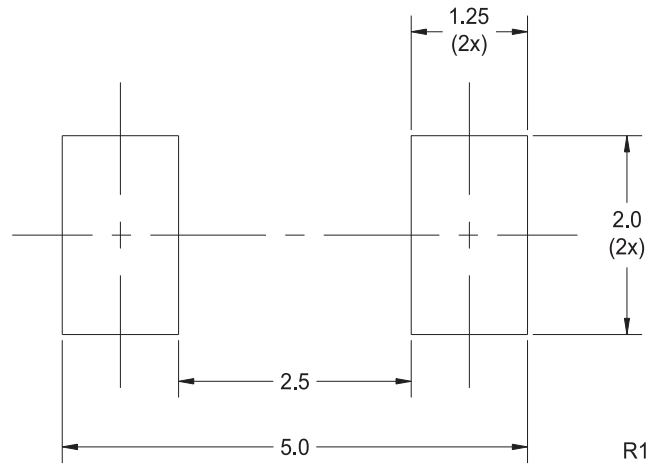


Mechanical Drawing



Part Marking: Cathode Band

Mounting Pad Geometry (Dimensions in mm)



R3 (4-March 2010)

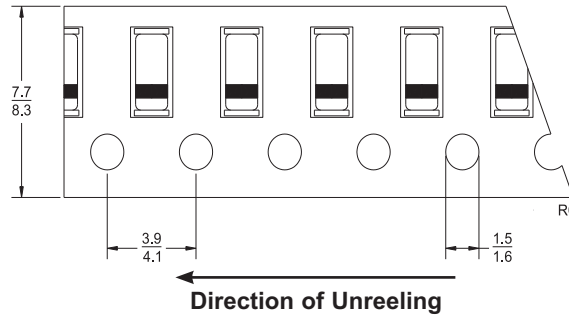
Package Details

SOD-80 Case



Tape Dimensions and Orientation (Dimensions in mm)

Tape Width: 8mm



Devices are taped in accordance with Electronic Industries Association Standard EIA-481-1-A

Packaging Base

7" Reel = 2,500 pcs.

Reel Labeling Information

Each reel is labeled with the following information:

Central Part Number, Customer Part Number, Purchase Order Number, Quantity, Lot Number, Date Code, Ship Date and Marking Code.

Reel Packing Information

Reel Size	Reels per Box (Maximum)	Parts per Box (Maximum)	Box Dimensions		Shipping Weight (Max.)	
			INCH	CM	LB	KG
7"	8	20,000	9x9x5	23x23x13	4	2
	17	42,500	9x9x9	23x23x23	8	4
	40	100,000	21x9x9	53x23x23	17	8
	108	270,000	27x9x17	69x23x43	45	21

Ordering Information

- For devices taped and reeled on 7" reels, add TR suffix to part number.
- All SMDs are available in small quantities for prototype and manual placement applications.

R3 (4-March 2010)

Material Composition Specification

SOD-80 Case



Device average mass 28 mg
 Fluctuation margin +/-10%

Component	Material	Material		Substance	CAS No.	Substance		
		(%wt)	(mg)			(%wt)	(mg)	(ppm)
active device	doped Si	0.11%	0.03	Si	7440-21-3	0.11%	0.03	1,071
leadframe	Fe alloy w/ silver plating	56.32%	15.77	Cu	7440-50-8	8.93%	2.5	89,286
				Fe	7439-89-6	23.93%	6.7	239,286
				Ni	7440-02-0	21.07%	5.9	210,714
				Ag	7440-22-4	2.39%	0.67	23,929
encapsulation	glass	40.0%	11.2	SiO ₂	7631-86-9	16.96%	4.75	169,643
				Pb	7439-92-1	23.04%	6.45	230,357
plating*	tin/lead process	3.57%	1.0	Sn	7440-31-5	2.86%	0.8	28,571
				Pb	7439-92-1	0.71%	0.2	7,143
	matte tin	3.57%	1.0	Sn	7440-31-5	3.57%	1.0	35,714

*For Lead Free plating, add suffix "PB FREE" to part number.
 For Tin/Lead plating, add suffix "TIN/LEAD" to part number.
 No suffix designation allows for the supply of either lead-free or tin/lead plated product depending on availability.

Disclaimer

The information provided in this Material Composition data sheet is, to the best of our knowledge, correct. However, there is no guarantee to completeness or accuracy, as some information is derived from data sources outside the company.

R5 (16-July 2018)