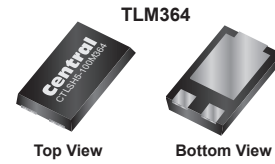


## CTLSH5-100M364

5.0A, 100V

### Low $V_F$ Schottky Rectifier in the TLM364 package



Central Semiconductor's CTLSH5-100M364 is a high performance 5 amp Schottky rectifier designed for applications requiring high power capability in a low profile package. This device is the perfect choice for space constrained applications.

#### Features:

- Low forward voltage
- Low reverse leakage current
- Low profile
- High surge capability

#### Applications:

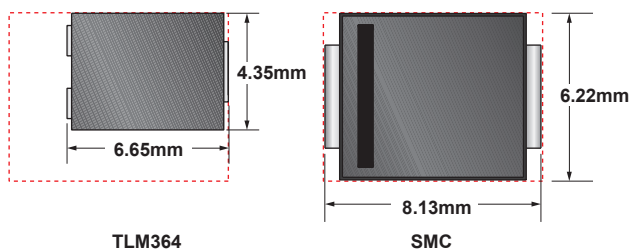
- DC-DC output rectification
- Reverse polarity protection
- By-pass diode
- OR-ing diode

#### Benefits:

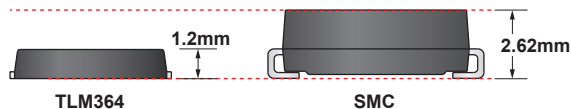
- Low total conduction losses
- High power density
- Small footprint and low profile

#### Package Size and Comparison:

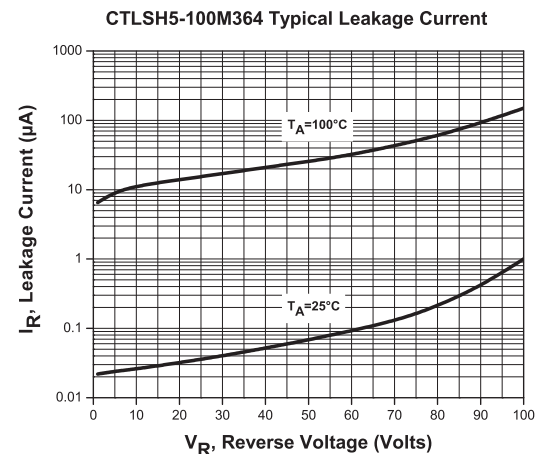
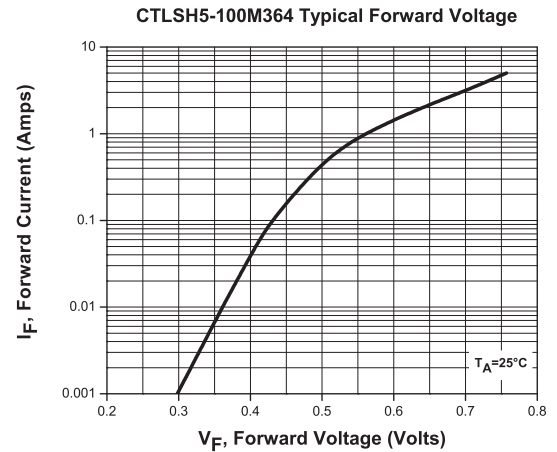
The TLM364 utilizes **42%** less board space than the SMC



The TLM364 has a **55%** lower profile than the SMC



#### Typical Electrical Characteristics



#### Samples



To order samples of this device visit:  
[www.centalsemi.com/info/CTLSH5-100M364](http://www.centalsemi.com/info/CTLSH5-100M364)

Maximum Ratings ( $T_A = 25^\circ\text{C}$ unless otherwise noted)				Electrical Characteristics ( $T_A = 25^\circ\text{C}$ unless otherwise noted)						
$V_{RRM}$	$I_O$	$T_J, T_{stg}$	$\theta_{JA}$	$V_F$		@ $I_F$	$I_R$		@ $V_R$	$C_J$
(V)	(A)	( $^\circ\text{C}$ )	( $^\circ\text{C}/\text{W}$ )	(V)	(V)	(A)	( $\mu\text{A}$ )	( $\mu\text{A}$ )	(V)	(pF)
MAX	MAX	MAX	MAX	TYP	MAX		TYP	MAX		TYP
100	5.0	-55 to +150	80	0.76	0.8	5.0	1.0	15	100	475
							*150	-	100	

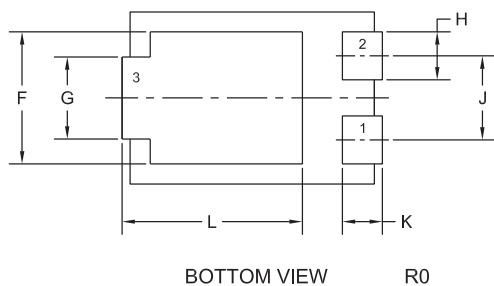
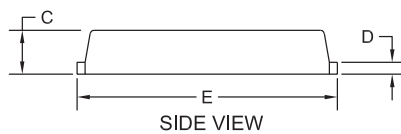
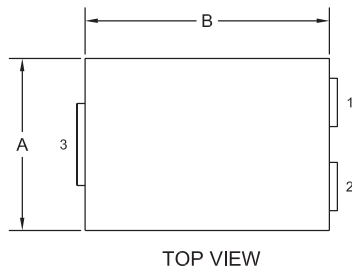
Use QR reader for direct link to product web page. weblink scan



# CTLSH5-100M364

# 5.0A, 100V Low V<sub>F</sub> Schottky Rectifier in the TLM364 package

## Mechanical Drawing - TLM364



SYMBOL	DIMENSIONS			
	INCHES		MILLIMETERS	
A	0.167	0.172	4.25	4.35
B	0.238	0.243	6.05	6.15
C	0.039	0.048	1.00	1.20
D	0.009	0.014	0.25	0.35
E	0.250	0.262	6.35	6.65
F	0.128	0.136	3.25	3.45
G	0.076	0.085	1.95	2.15
H	0.044	0.052	1.10	1.30
J	0.083		2.10	
K	0.035	0.044	0.90	1.10
L	0.171	0.183	4.35	4.65

TLM364 (REV:R0)

### Lead Code:

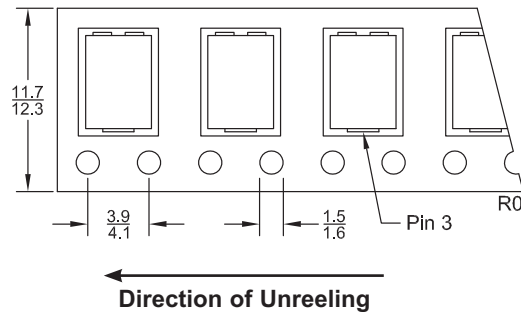
- 1) Anode
- 2) Anode
- 3) Cathode

### Marking Code:

CTLSH510

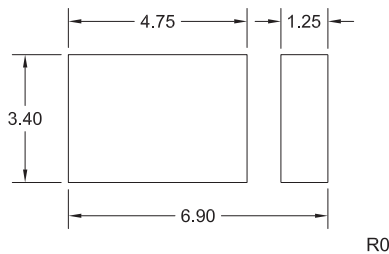
## Tape Dimensions and Orientation (Dimensions in mm)

Tape Width: 12mm



\* Devices are taped in accordance with Electronic Industries Association Standard EIA-481-D

## Mounting Pad Geometry (Dimensions in mm)



## Literature



Stay up to date on the latest new products from Central

Subscribe to Central's  
**eNewsletter**



[www.centrasemi.com/subscribe](http://www.centrasemi.com/subscribe)

## Packaging Base / Ordering Information

Reel Size	Quantity	Central Item No.
13"	5,000	CTLSH5-100M364 TR13

New  
**SMD SELECTION GUIDE**

Order your selection guide today.  
Visit: [web.centrasemi.com/search/sample.php](http://web.centrasemi.com/search/sample.php)

Sample devices available upon request. To order samples of this device visit: [www.centrasemi.com/info/CTLSH5-100M364](http://www.centrasemi.com/info/CTLSH5-100M364)



For further information contact:  
Sales at Central Semiconductor Corp.  
(631) 435-1110 or visit:  
[www.centrasemi.com](http://www.centrasemi.com)