



## Test Report

No. LPCI/22891-1/11  
CTS Ref. CTS/11/4096/Dynacraft

Date : 24/10/2011

Page: 1 of 5

**DYNACRAFT INDUSTRIES SDN. BHD.**  
**255-A, BLOCK D, PHASE II, BAYAN LEPAS INDUSTRIAL ZONE,**  
**11900 PENANG, MALAYSIA.**

**The following merchandise was (were) submitted and identified by the client as:**

Sample Description : Standard NiPdAu leadframe using copper blank C7025  
Stock # : EN100225NAXC  
JOB # : 801054  
Manufacturing Date : 24 August 2011  
Country of Origin : Malaysia  
Sample Receiving Date : 18/10/2011  
Testing Period : 18/10/2011 to 24/10/2011

---

Test Requested : Selected test(s) as requested by client  
Test Method : Please refer to next page(s).  
Test Results : Please refer to next page(s).  
Analysts : Teh Pui Sean & Tay Siam Pine

SGS LABORATORY SERVICES (M) SDN. BHD.

CHONG KIEN LEN  
B.Sc.(HONS) AMIC  
LAB MANAGER

This document is issued by the Company subject to its General Conditions of Service ([www.sgs.com/terms\\_and\\_conditions.htm](http://www.sgs.com/terms_and_conditions.htm)) and Terms and Conditions for Electronic Documents ([www.sgs.com/terms\\_e-document.htm](http://www.sgs.com/terms_e-document.htm)). Attention is drawn to the limitations of liability, indemnification and jurisdictional issues established therein. Even if printed this electronic document is to be treated as an original within the meaning of UCP 600 article 20b. The authenticity of this document may be verified at [www.sgsonsite.com/authentication](http://www.sgsonsite.com/authentication). Any holder of this document is advised that information contained hereon reflects the Company's findings at the time of its intervention only and within the limits of client's instructions, if any. The Company's sole responsibility is to its Client and this document does not exonerate parties to a transaction from exercising all their rights and obligations under the transaction documents. **Unless otherwise stated the results shown in this test report refer only to the sample(s) tested and such sample(s) are retained for three months only.**

# Test Report

No. LPCI/22891-1/11  
 CTS Ref. CTS/11/4096/Dynacraft

Date : 24/10/2011

Page: 2 of 5

Test results:


Test Part Description :

Sample Description : As per page 1 & 4

**RoHS Directive 2011/65/EU Annex II**

Test Item(s):	Unit	Test Method	Results	MDL
Cadmium(Cd)	mg/kg	With reference to IEC 62321:2008, and performed by ICP-OES	N.D.	2
Lead (Pb)	mg/kg	With reference to IEC 62321:2008, and performed by ICP-OES	N.D.	2
Mercury (Hg)	mg/kg	With reference to IEC 62321:2008, and performed by ICP-OES	N.D.	2
Hexavalent Chromium (CrVI) by Spot test / boiling water extraction (optional) #	---	With reference to IEC 62321:2008	Negative	0.02mg/kg per 50cm <sup>2</sup> sample in 50mL solution
<b>Sum of PBBs</b>	mg/kg	With reference to IEC 62321:2008, and performed by GC-MS	N.D.	-
Monobromobiphenyl	mg/kg	With reference to IEC 62321:2008, and performed by GC-MS	N.D.	5
Dibromobiphenyl	mg/kg	With reference to IEC 62321:2008, and performed by GC-MS	N.D.	5
Tribromobiphenyl	mg/kg	With reference to IEC 62321:2008, and performed by GC-MS	N.D.	5
Tetrabromobiphenyl	mg/kg	With reference to IEC 62321:2008, and performed by GC-MS	N.D.	5
Hexabromobiphenyl	mg/kg	With reference to IEC 62321:2008, and performed by GC-MS	N.D.	5
Pentabromobiphenyl	mg/kg	With reference to IEC 62321:2008, and performed by GC-MS	N.D.	5
Heptabromobiphenyl	mg/kg	With reference to IEC 62321:2008, and performed by GC-MS	N.D.	5
Octabromobiphenyl	mg/kg	With reference to IEC 62321:2008, and performed by GC-MS	N.D.	5
Nonabromobiphenyl	mg/kg	With reference to IEC 62321:2008, and performed by GC-MS	N.D.	5
Decabromobiphenyl	mg/kg	With reference to IEC 62321:2008, and performed by GC-MS	N.D.	5

SGS LABORATORY SERVICES (M) SDN. BHD.



CHONG KIEN LEN  
 B.Sc.(HONS) AMIC  
 LAB MANAGER

This document is issued by the Company subject to its General Conditions of Service ([www.sgs.com/terms\\_and\\_conditions.htm](http://www.sgs.com/terms_and_conditions.htm)) and Terms and Conditions for Electronic Documents ([www.sgs.com/terms\\_e-document.htm](http://www.sgs.com/terms_e-document.htm)). Attention is drawn to the limitations of liability, indemnification and jurisdictional issues established therein. Even if printed this electronic document is to be treated as an original within the meaning of UCP 600 article 20b. The authenticity of this document may be verified at [www.sgsonsite.com/authentication](http://www.sgsonsite.com/authentication). Any holder of this document is advised that information contained hereon reflects the Company's findings at the time of its intervention only and within the limits of client's instructions, if any. The Company's sole responsibility is to its Client and this document does not exonerate parties to a transaction from exercising all their rights and obligations under the transaction documents. **Unless otherwise stated the results shown in this test report refer only to the sample(s) tested and such sample(s) are retained for three months only.**

Sum of PBDEs	mg/kg	With reference to IEC 62321:2008, and performed by GC-MS	N.D.	-
Monobromodiphenyl ether	mg/kg	With reference to IEC 62321:2008, and performed by GC-MS	N.D.	5
Dibromodiphenyl ether	mg/kg	With reference to IEC 62321:2008, and performed by GC-MS	N.D.	5
Tribromodiphenyl ether	mg/kg	With reference to IEC 62321:2008, and performed by GC-MS	N.D.	5
Tetrabromodiphenyl ether	mg/kg	With reference to IEC 62321:2008, and performed by GC-MS	N.D.	5
Pentabromodiphenyl ether	mg/kg	With reference to IEC 62321:2008, and performed by GC-MS	N.D.	5
Hexabromodiphenyl ether	mg/kg	With reference to IEC 62321:2008, and performed by GC-MS	N.D.	5
Heptabromodiphenyl ether	mg/kg	With reference to IEC 62321:2008, and performed by GC-MS	N.D.	5
Octabromodiphenyl ether	mg/kg	With reference to IEC 62321:2008, and performed by GC-MS	N.D.	5
Nonabromodiphenyl ether	mg/kg	With reference to IEC 62321:2008, and performed by GC-MS	N.D.	5
Decabromodiphenyl ether	mg/kg	With reference to IEC 62321:2008, and performed by GC-MS	N.D.	5

Note : (a) mg/kg = ppm ; (0.1wt% = 1000ppm)

(b) N.D. = Not Detected

(c) MDL = Method Detection Limit

(d) # = **Spot-Test:**

a. Negative means the absence of Cr(VI) on the tested areas

b. Positive means the presence of Cr(VI) on the tested areas

(The tested sample should be further verified by boiling-water-extraction method if the spot test result is negative or cannot be confirmed)

**Boiling water extraction:**

a. Negative means the absence of Cr(VI) on the tested areas

b. Positive means the presence of Cr(VI) on the tested areas;

The detected concentration in 50 mL boiling water extraction solution is equal or greater than 0.02 mg/kg with 50 cm<sup>2</sup> sample surface area.

For corrosion protection coatings on metals: Information on storage conditions and production date of the tested sample is unavailable and thus results of Cr(VI) represent status of the sample at the time of testing.

(e) - = Not regulated

SGS LABORATORY SERVICES (M) SDN. BHD.



CHONG KIEN LEN  
 B.Sc.(HONS) AMIC  
 LAB MANAGER

This document is issued by the Company subject to its General Conditions of Service ([www.sgs.com/terms\\_and\\_conditions.htm](http://www.sgs.com/terms_and_conditions.htm)) and Terms and Conditions for Electronic Documents ([www.sgs.com/terms\\_e-document.htm](http://www.sgs.com/terms_e-document.htm)). Attention is drawn to the limitations of liability, indemnification and jurisdictional issues established therein. Even if printed this electronic document is to be treated as an original within the meaning of UCP 600 article 20b. The authenticity of this document may be verified at [www.sgsonsite.com/authentication](http://www.sgsonsite.com/authentication). Any holder of this document is advised that information contained hereon reflects the Company's findings at the time of its intervention only and within the limits of client's instructions, if any. The Company's sole responsibility is to its Client and this document does not exonerate parties to a transaction from exercising all their rights and obligations under the transaction documents. Unless otherwise stated the results shown in this test report refer only to the sample(s) tested and such sample(s) are retained for three months only.

## Test Report

No. LPCI/22891-1/11  
CTS Ref. CTS/11/4096/Dynacraft

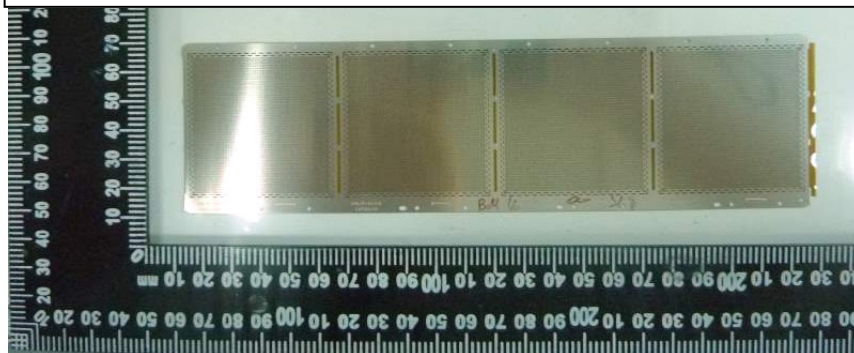
Date : 24/10/2011

Page: 4 of 5

### Test Part Description :

Sample Description : Standard NiPdAu leadframe using copper blank C7025  
Stock # : EN100225NAXC  
JOB # : 801054  
Manufacturing Date : 24 August 2011  
Country of Origin : Malaysia

**DYNACRAFT INDUSTRIES SDN. BHD.**  
**LPCI/22891-1/11**



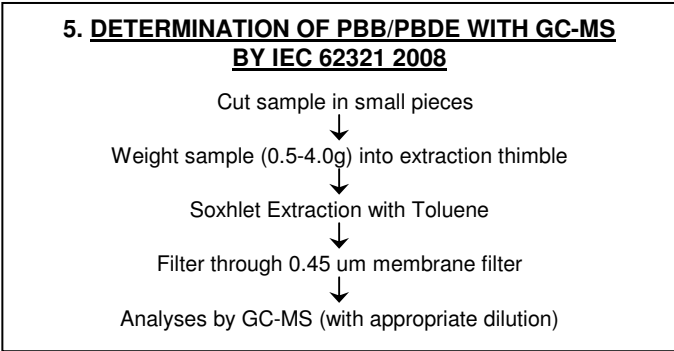
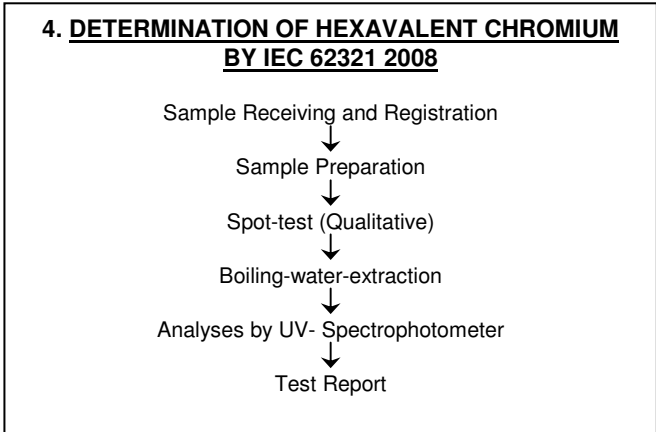
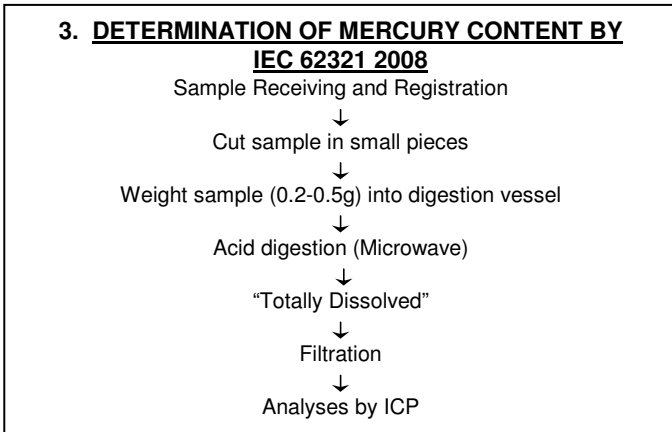
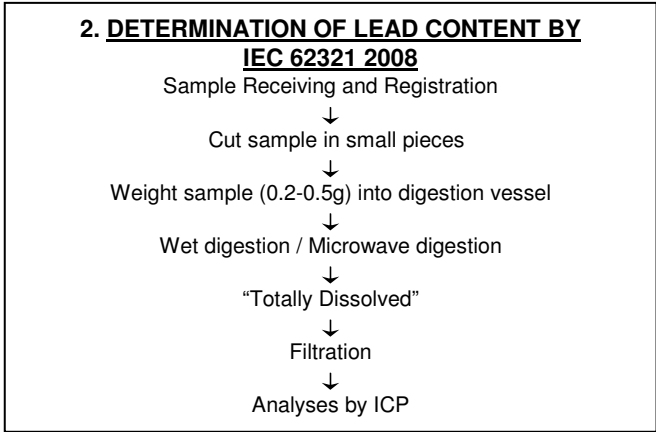
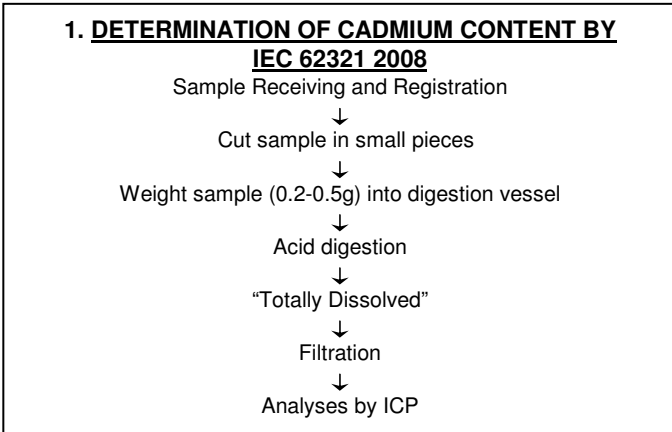
SGS authenticate the photo on original report only

SGS LABORATORY SERVICES (M) SDN. BHD.

A handwritten signature in black ink, appearing to read 'CHONG KIEN LEN', written over a horizontal dashed line.

**CHONG KIEN LEN**  
**B.Sc.(HONS) AMIC**  
**LAB MANAGER**

This document is issued by the Company subject to its General Conditions of Service ([www.sgs.com/terms\\_and\\_conditions.htm](http://www.sgs.com/terms_and_conditions.htm)) and Terms and Conditions for Electronic Documents ([www.sgs.com/terms\\_e-document.htm](http://www.sgs.com/terms_e-document.htm)). Attention is drawn to the limitations of liability, indemnification and jurisdictional issues established therein. Even if printed this electronic document is to be treated as an original within the meaning of UCP 600 article 20b. The authenticity of this document may be verified at [www.sgsonsite.com/authentication](http://www.sgsonsite.com/authentication). Any holder of this document is advised that information contained hereon reflects the Company's findings at the time of its intervention only and within the limits of client's instructions, if any. The Company's sole responsibility is to its Client and this document does not exonerate parties to a transaction from exercising all their rights and obligations under the transaction documents. **Unless otherwise stated the results shown in this test report refer only to the sample(s) tested and such sample(s) are retained for three months only.**



\*\*\*\* End of Report \*\*\*\*

SGS LABORATORY SERVICES (M) SDN. BHD.



**CHONG KIEN LEN**  
 B.Sc.(HONS) AMIC  
 LAB MANAGER

This document is issued by the Company subject to its General Conditions of Service ([www.sgs.com/terms\\_and\\_conditions.htm](http://www.sgs.com/terms_and_conditions.htm)) and Terms and Conditions for Electronic Documents ([www.sgs.com/terms\\_e-document.htm](http://www.sgs.com/terms_e-document.htm)). Attention is drawn to the limitations of liability, indemnification and jurisdictional issues established therein. Even if printed this electronic document is to be treated as an original within the meaning of UCP 600 article 20b. The authenticity of this document may be verified at [www.sgsonsite.com/authentication](http://www.sgsonsite.com/authentication). Any holder of this document is advised that information contained hereon reflects the Company's findings at the time of its intervention only and within the limits of client's instructions, if any. The Company's sole responsibility is to its Client and this document does not exonerate parties to a transaction from exercising all their rights and obligations under the transaction documents. **Unless otherwise stated the results shown in this test report refer only to the sample(s) tested and such sample(s) are retained for three months only.**