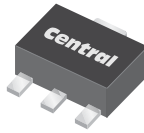
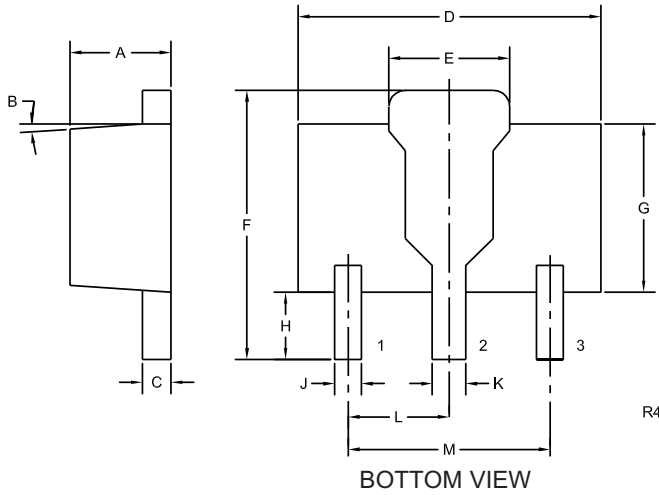


Package Details

SOT-89 Case



Mechanical Drawing



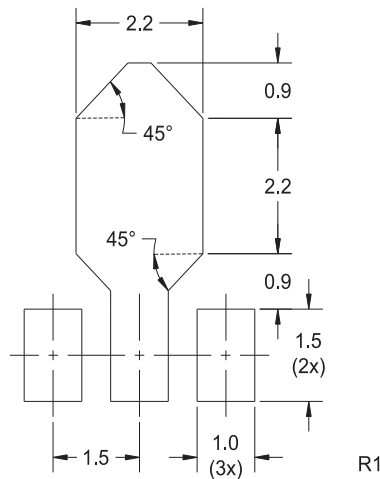
| SYMBOL | INCHES | | MILLIMETERS | |
|--------|--------|-------|-------------|------|
| | MIN | MAX | MIN | MAX |
| A | 0.055 | 0.067 | 1.40 | 1.70 |
| B | 4° | | 4° | |
| C | 0.014 | 0.018 | 0.35 | 0.46 |
| D | 0.173 | 0.185 | 4.40 | 4.70 |
| E | 0.064 | 0.074 | 1.62 | 1.87 |
| F | 0.146 | 0.177 | 3.70 | 4.50 |
| G | 0.090 | 0.106 | 2.29 | 2.70 |
| H | 0.028 | 0.051 | 0.70 | 1.30 |
| J | 0.014 | 0.019 | 0.36 | 0.48 |
| K | 0.017 | 0.023 | 0.44 | 0.58 |
| L | 0.059 | | 1.50 | |
| M | 0.118 | | 3.00 | |

SOT-89 (REV: R4)

Lead Code:
Reference individual
device datasheet.

Part Marking: Full Part Number

Mounting Pad Geometry (Dimensions in mm)



R4 (4-March 2010)

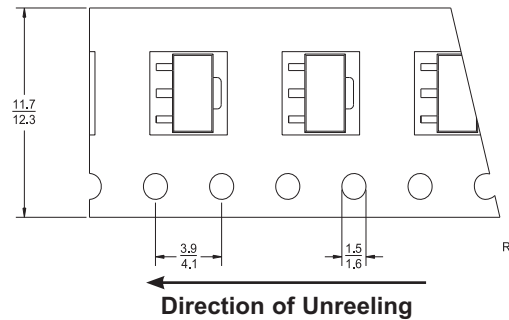
Package Details

SOT-89 Case



Tape Dimensions and Orientation (Dimensions in mm)

Tape Width: 12mm



Devices are taped in accordance with Electronic Industries Association Standard EIA-481-1-A

Packaging Base

7" Reel = 1,000 pcs.
13" Reel = 4,000 pcs.

Reel Labeling Information

Each reel is labeled with the following information:

Central Part Number, Customer Part Number, Purchase Order Number, Quantity, Lot Number, Date Code and Ship Date.

Reel Packing Information

| Reel Size | Reels per Box (Maximum) | Parts per Box (Maximum) | Box Dimensions | | Shipping Weight (Max.) | |
|-----------|-------------------------|-------------------------|----------------|----------|------------------------|----|
| | | | INCH | CM | LB | KG |
| 7" | 6 | 6,000 | 9x9x5 | 23x23x13 | 3 | 2 |
| | 13 | 13,000 | 9x9x9 | 23x23x23 | 6 | 3 |
| | 32 | 32,000 | 21x9x9 | 53x23x23 | 13 | 6 |
| | 82 | 82,000 | 27x9x17 | 69x23x43 | 35 | 16 |
| 13" | 6 | 24,000 | 15x4x15 | 38x10x38 | 10 | 5 |
| | 14 | 56,000 | 15x15x9 | 38x38x23 | 22 | 10 |
| | 26 | 104,000 | 15x15x18 | 38x38x46 | 40 | 19 |

Ordering Information

- For devices taped and reeled on 7" reels, add TR suffix to part number.
- For devices taped and reeled on 13" reels, add TR13 suffix to part number.
- All SMDs are available in small quantities for prototype and manual placement applications.

R4 (4-March 2010)